

18 Stücke für (Block - Band 1 = 9 Stücke)
Klavier " 2 = "

1969

Adolf Scherbaum

9 Stücke für Klavier

1969

Adolf Scherbaum

(Band 1)

Block (H)

Presto (~~sehr schnell~~)

4/4 (4/2) fff

fff

fff

fff



Stück (B)

lento (sehr ruhig)

Handwritten musical notation for the first system. It features a treble clef and a 3/4 time signature. The music consists of a single melodic line with a few notes, including a half note and a quarter note. There are dynamic markings such as *pp* and accents. Above the staff, there are handwritten notes: $\# \text{f}'$, $\# \text{g}'$, $\text{b} \text{g}'$, and $\text{b} \text{g}'$, with lines connecting them to specific notes in the melody.

Handwritten musical notation for the second system. It features a treble clef and a 3/4 time signature. The music consists of a single melodic line with several notes, including a half note and a quarter note. There are dynamic markings such as *pp* and *f*. The notation includes slurs and accents over the notes.

Handwritten musical notation for the third system. It features a treble clef and a 3/4 time signature. The music consists of a single melodic line with several notes, including a half note and a quarter note. There are dynamic markings such as *f* and *pp*. The notation includes slurs and accents over the notes. At the end of the system, there is a box containing the word "Fue".

etwas bewegter

Handwritten musical notation for the first system. The treble staff contains a melodic line with notes, rests, and slurs. The bass staff contains a harmonic accompaniment with chords and single notes. A dynamic marking 'ff' is present in the first measure.

Handwritten musical notation for the second system. The treble staff continues the melodic line with notes and rests. The bass staff continues the harmonic accompaniment with chords and single notes.

wieder ruhig

Handwritten musical notation for the third system. The treble staff features a melodic line with notes and rests. The bass staff features a harmonic accompaniment. A dynamic marking 'pp' is present in the first measure. The system concludes with a double bar line and the word 'Ende' written above the staff.



Block C

Presto

Handwritten musical notation, first system. Treble clef, four measures. Includes slurs, accents, and fingering (1, 2, 1).

Handwritten musical notation, second system. Treble clef, four measures. Includes slurs, accents, and fingering (1, 2, 1).

Handwritten musical notation, third system. Treble clef, four measures. Includes slurs, accents, and fingering. A double bar line is present with the word "FINE" written vertically. The word "(ruhig)" is written above the final measure.

Handwritten musical notation, fourth system. Treble clef, four measures. Includes slurs, accents, and fingering. The word "(Pedal bis)" is written above the final measure. The word "rit -" is written below the final measure.

Dic.
al.
Fue

Flosh [D]

lento (pesante) pp - sempre cresc. - fff

Handwritten musical notation for the first system. It consists of two staves: a treble clef staff and a bass clef staff. The treble staff begins with a treble clef, a key signature of one sharp (F#), and a 4/4 time signature. The first measure contains a half note F#4. The second measure contains a quarter note G#4, a quarter note A4, and a quarter note B4. The third measure contains a quarter note C5, a quarter note B4, and a quarter note A4. The fourth measure contains a quarter note G#4, a quarter note F#4, and a quarter note E4. The fifth measure contains a quarter note D4, a quarter note C4, and a quarter note B3. The sixth measure contains a quarter note A3, a quarter note G3, and a quarter note F3. The seventh measure contains a quarter note E3, a quarter note D3, and a quarter note C3. The eighth measure contains a quarter note B2, a quarter note A2, and a quarter note G2. The bass staff begins with a bass clef, a key signature of one sharp (F#), and a 4/4 time signature. The first measure contains a half note F#2. The second measure contains a quarter note G#2, a quarter note A2, and a quarter note B2. The third measure contains a quarter note C3, a quarter note B2, and a quarter note A2. The fourth measure contains a quarter note G#2, a quarter note F#2, and a quarter note E2. The fifth measure contains a quarter note D2, a quarter note C2, and a quarter note B1. The sixth measure contains a quarter note A1, a quarter note G1, and a quarter note F1. The seventh measure contains a quarter note E1, a quarter note D1, and a quarter note C1. The eighth measure contains a quarter note B0, a quarter note A0, and a quarter note G0. The system is marked with *pp* and includes dynamic markings *f* and *f* above the notes.

Handwritten musical notation for the second system. It consists of two staves: a treble clef staff and a bass clef staff. The treble staff begins with a treble clef, a key signature of one sharp (F#), and a 4/4 time signature. The first measure contains a half note F#4. The second measure contains a quarter note G#4, a quarter note A4, and a quarter note B4. The third measure contains a quarter note C5, a quarter note B4, and a quarter note A4. The fourth measure contains a quarter note G#4, a quarter note F#4, and a quarter note E4. The fifth measure contains a quarter note D4, a quarter note C4, and a quarter note B3. The sixth measure contains a quarter note A3, a quarter note G3, and a quarter note F3. The seventh measure contains a quarter note E3, a quarter note D3, and a quarter note C3. The eighth measure contains a quarter note B2, a quarter note A2, and a quarter note G2. The bass staff begins with a bass clef, a key signature of one sharp (F#), and a 4/4 time signature. The first measure contains a half note F#2. The second measure contains a quarter note G#2, a quarter note A2, and a quarter note B2. The third measure contains a quarter note C3, a quarter note B2, and a quarter note A2. The fourth measure contains a quarter note G#2, a quarter note F#2, and a quarter note E2. The fifth measure contains a quarter note D2, a quarter note C2, and a quarter note B1. The sixth measure contains a quarter note A1, a quarter note G1, and a quarter note F1. The seventh measure contains a quarter note E1, a quarter note D1, and a quarter note C1. The eighth measure contains a quarter note B0, a quarter note A0, and a quarter note G0. The system is marked with *f* and *f* above the notes.

Handwritten musical notation for the third system. It consists of two staves: a treble clef staff and a bass clef staff. The treble staff begins with a treble clef, a key signature of one sharp (F#), and a 4/4 time signature. The first measure contains a half note F#4. The second measure contains a quarter note G#4, a quarter note A4, and a quarter note B4. The third measure contains a quarter note C5, a quarter note B4, and a quarter note A4. The fourth measure contains a quarter note G#4, a quarter note F#4, and a quarter note E4. The fifth measure contains a quarter note D4, a quarter note C4, and a quarter note B3. The sixth measure contains a quarter note A3, a quarter note G3, and a quarter note F3. The seventh measure contains a quarter note E3, a quarter note D3, and a quarter note C3. The eighth measure contains a quarter note B2, a quarter note A2, and a quarter note G2. The bass staff begins with a bass clef, a key signature of one sharp (F#), and a 4/4 time signature. The first measure contains a half note F#2. The second measure contains a quarter note G#2, a quarter note A2, and a quarter note B2. The third measure contains a quarter note C3, a quarter note B2, and a quarter note A2. The fourth measure contains a quarter note G#2, a quarter note F#2, and a quarter note E2. The fifth measure contains a quarter note D2, a quarter note C2, and a quarter note B1. The sixth measure contains a quarter note A1, a quarter note G1, and a quarter note F1. The seventh measure contains a quarter note E1, a quarter note D1, and a quarter note C1. The eighth measure contains a quarter note B0, a quarter note A0, and a quarter note G0. The system is marked with *mf* and includes dynamic markings *f* and *f* above the notes.

Handwritten musical notation for the first system, featuring a treble and bass staff with various notes, rests, and accidentals.

Handwritten musical notation for the second system, continuing the piece with complex rhythmic patterns and accidentals.

Handwritten musical notation for the third system, including dynamic markings like "mf" and "f".

Handwritten musical notation for the fourth system, ending with a double bar line and a fermata.

großes mit.



Block E

rasch (beftig)

1 2 3 4

(hart) ff

Handwritten musical notation for the first system. It consists of two staves: a treble clef staff and a bass clef staff. The treble staff begins with a treble clef, a 6/8 time signature, and a key signature of two sharps (F# and C#). The first measure contains a quarter note G4, a quarter note A4, and a quarter note B4. The second measure contains a quarter note C5, a quarter note B4, and a quarter note A4. The third measure contains a quarter note G4, a quarter note F#4, and a quarter note E4. The fourth measure contains a quarter note D4, a quarter note C#4, and a quarter note B3. The bass staff begins with a bass clef and a 6/8 time signature. The first measure contains a quarter note G3, a quarter note A3, and a quarter note B3. The second measure contains a quarter note C4, a quarter note B3, and a quarter note A3. The third measure contains a quarter note G3, a quarter note F#3, and a quarter note E3. The fourth measure contains a quarter note D3, a quarter note C#3, and a quarter note B2. There are dynamic markings '(hart)' and 'ff' in the first measure. There are also some handwritten annotations above the notes, including '1 2 3 4' and some tilde-like symbols.

Handwritten musical notation for the second system. It consists of two staves: a treble clef staff and a bass clef staff. The treble staff begins with a treble clef and a 6/8 time signature. The first measure contains a quarter note G4, a quarter note A4, and a quarter note B4. The second measure contains a quarter note C5, a quarter note B4, and a quarter note A4. The third measure contains a quarter note G4, a quarter note F#4, and a quarter note E4. The fourth measure contains a quarter note D4, a quarter note C#4, and a quarter note B3. The bass staff begins with a bass clef and a 6/8 time signature. The first measure contains a quarter note G3, a quarter note A3, and a quarter note B3. The second measure contains a quarter note C4, a quarter note B3, and a quarter note A3. The third measure contains a quarter note G3, a quarter note F#3, and a quarter note E3. The fourth measure contains a quarter note D3, a quarter note C#3, and a quarter note B2. There are some handwritten annotations above the notes, including '1 2 3 4' and some tilde-like symbols.

Handwritten musical notation for the third system. It consists of two staves: a treble clef staff and a bass clef staff. The treble staff begins with a treble clef and a 6/8 time signature. The first measure contains a quarter note G4, a quarter note A4, and a quarter note B4. The second measure contains a quarter note C5, a quarter note B4, and a quarter note A4. The third measure contains a quarter note G4, a quarter note F#4, and a quarter note E4. The fourth measure contains a quarter note D4, a quarter note C#4, and a quarter note B3. The bass staff begins with a bass clef and a 6/8 time signature. The first measure contains a quarter note G3, a quarter note A3, and a quarter note B3. The second measure contains a quarter note C4, a quarter note B3, and a quarter note A3. The third measure contains a quarter note G3, a quarter note F#3, and a quarter note E3. The fourth measure contains a quarter note D3, a quarter note C#3, and a quarter note B2. There are some handwritten annotations above the notes, including '1 2 3 4' and some tilde-like symbols.

Block F

sehr ruhig

Handwritten musical notation for the first system of Block F. It features a grand staff with treble and bass clefs. The time signature is 4/4. The music is marked 'p' (piano) and includes a large slur over the first two measures. The notes are mostly quarter and eighth notes with various accidentals. The bass line consists of simple chords.

Handwritten musical notation for the second system of Block F. It features a grand staff with treble and bass clefs. The music is marked 'p' (piano) and includes a large slur over the first two measures. The notes are mostly quarter and eighth notes with various accidentals. The bass line consists of simple chords.

Handwritten musical notation for the third system of Block F. It features a grand staff with treble and bass clefs. The music is marked 'p' (piano) and includes a large slur over the first two measures. The notes are mostly quarter and eighth notes with various accidentals. The bass line consists of simple chords.

Handwritten musical notation for the first system. The right hand (treble clef) features a melodic line starting with a half note G#4, followed by a series of eighth notes: A4, B4, C5, D5, E5, F5, G5, A5, B5, C6, D6, E6, F6, G6, A6, B6, C7. The left hand (bass clef) provides harmonic support with chords: G#4, B4, D5; G#4, B4, D5; G#4, B4, D5; G#4, B4, D5. A dynamic marking 'p' is present at the beginning.

Handwritten musical notation for the second system. The right hand (treble clef) features a melodic line starting with a half note Bb4, followed by a series of eighth notes: C5, D5, E5, F5, G5, A5, B5, C6, D6, E6, F6, G6, A6, B6, C7. The left hand (bass clef) provides harmonic support with chords: Bb4, D5, F5; Bb4, D5, F5; Bb4, D5, F5; Bb4, D5, F5. A dynamic marking 'mf' is present. The system concludes with the handwritten word 'FIN'.

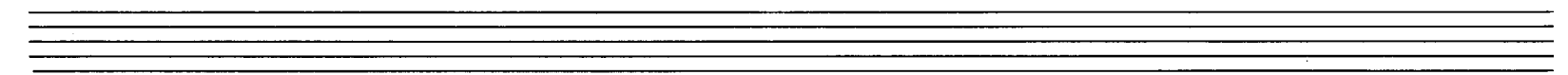
Handwritten musical notation for the third system. The right hand (treble clef) features a melodic line starting with a half note Bb4, followed by a series of eighth notes: C5, D5, E5, F5, G5, A5, B5, C6, D6, E6, F6, G6, A6, B6, C7. The left hand (bass clef) provides harmonic support with chords: Bb4, D5, F5; Bb4, D5, F5; Bb4, D5, F5; Bb4, D5, F5. A dynamic marking 'pp' is present. The system concludes with the handwritten word 'FIN'.

Handwritten musical notation for the fourth system. The right hand (treble clef) features a melodic line starting with a half note Bb4, followed by a series of eighth notes: C5, D5, E5, F5, G5, A5, B5, C6, D6, E6, F6, G6, A6, B6, C7. The left hand (bass clef) provides harmonic support with chords: Bb4, D5, F5; Bb4, D5, F5; Bb4, D5, F5; Bb4, D5, F5. A dynamic marking 'pp' is present. The system concludes with the handwritten word 'FIN'.

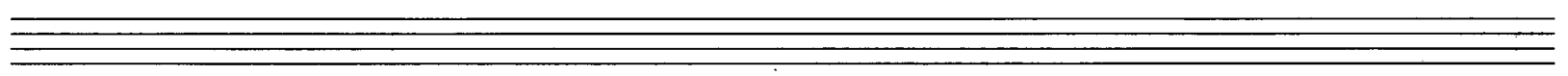
Block **G** (3x)

sehr rasch (leicht)

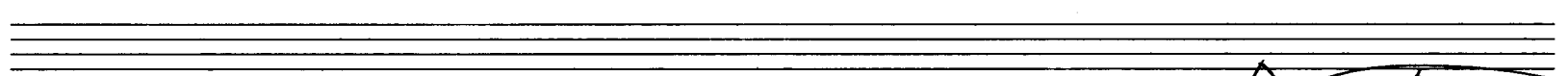
2/4 pp



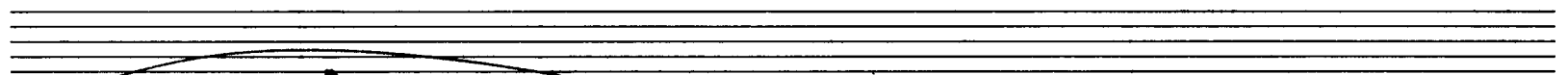
Handwritten musical notation for the first system. The upper staff contains a melodic line with notes and accidentals. The lower staff contains a complex accompaniment with many beamed notes and slurs.



Handwritten musical notation for the second system, continuing the melodic and accompanimental lines from the first system.



Handwritten musical notation for the third system. It features a melodic line with various accidentals and a complex accompaniment. A large slur covers the final two measures of the system.



Handwritten musical notation for the fourth system, concluding the piece. It includes dynamic markings such as *p* and *pp*, and ends with a circled *Fine* marking.

Block H

sehr breit - (pesante)

Handwritten musical notation for the first system. The treble clef staff contains notes with stems and beams, including a triplet of eighth notes. The bass clef staff contains chords and a wavy line labeled "Gliss" (glissando). Above the treble staff, there are handwritten notes: "b", "1", "b", and "#".

Handwritten musical notation for the second system. The treble clef staff continues with notes and rests. The bass clef staff features chords and a wavy line labeled "Gliss". Above the treble staff, there are handwritten notes: "b", "1", and "#".

Handwritten musical notation for the third system. The treble clef staff has notes and rests. The bass clef staff has chords and a double bar line. Above the treble staff, there are handwritten notes: "#", "#", and "#". To the right of the treble staff, the text "(2+ gut)" is written. The system ends with a double bar line and a fermata over the final chord.

Handwritten musical notation for the fourth system. The treble clef staff has notes and rests. The bass clef staff has chords and rests. Above the treble staff, there is a box containing the word "Fine!".

Block i

Prestissimo (oder mehr)

Tempo 1

pp = sempre cresc.

Lento (pesante)

ff =

größerer gut

1+ D.C.
2+ D.C. al \oplus

hart

Fine

9 Stücke für Klavier

1969

Adolf Scherbaum
(Band 2)

Block J

(breit)

(letzte + rit)

Handwritten musical score for the first system, featuring a treble and bass clef with complex chordal textures and a fermata over the final measure.

1+ pp (2+77)

Handwritten musical score for the second system, starting with a piano (pp) dynamic and a first ending bracket.

Handwritten musical score for the third system, continuing the melodic and harmonic development.

2. + D.G. al ϕ

pesante (rit)

Finis

Handwritten musical score for the fourth system, including a second ending bracket, a 'pesante (rit)' marking, and a circled 'Finis'.

LEBENS
 Protokoll-Schutzmarke
 № 2
 12 linig

Block K

mäßig *rasch* (*frei*) (*Ad libitum*)

$\frac{3}{4}$ (p) (*leicht*)

sehr rasch (*legg.*)

(poco rit) (p)

(*Prestissimo*)

rit-dim (ff)

(accel)

Handwritten musical notation for the first system, featuring a treble and bass clef with various notes and accidentals.

(of 3 print)

Handwritten musical notation for the second system, including a treble and bass clef with notes and a '3' marking.

1x D.E. | dann weiter)
2x P.C.

so rasch (legg.)
als
möglichst
ppp

Pedal - p

Handwritten musical notation for the third system with performance instructions like 'so rasch' and 'ppp'.

Fine

Handwritten musical notation for the fourth system, ending with a 'Fine' marking.

Block [L]

Lento (marcia funebre)

ppp (*sempre cresc. bis ffff*)
so langsam als möglich

ppp 4/8

777

sempre cresc. - - -

^ ^

Handwritten musical notation for the first system. The treble staff contains several notes with slurs and accents. The bass staff shows chords and rests, with a circled 'f' marking a dynamic change.

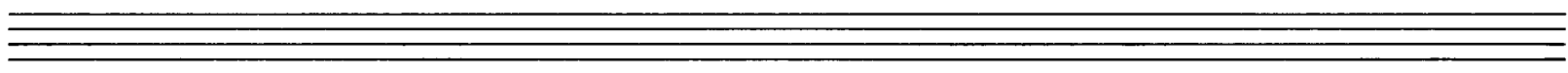
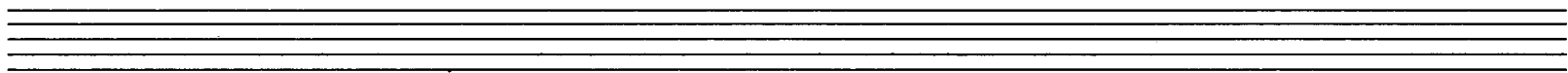
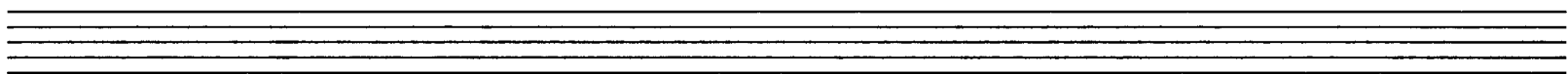
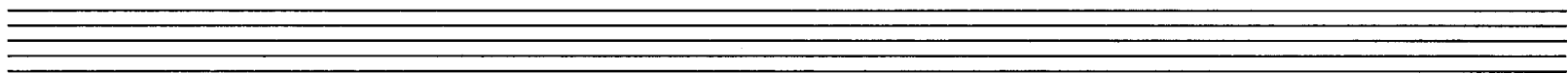
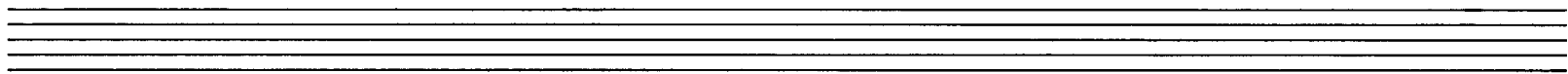
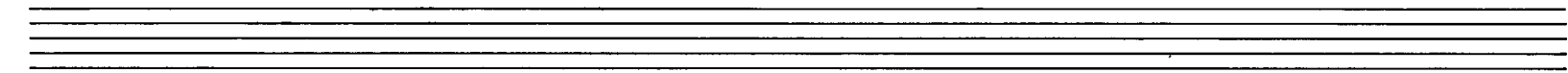
Handwritten musical notation for the second system. The treble staff has notes with slurs and accents. The bass staff features chords and rests, with a circled 'f' marking a dynamic change.

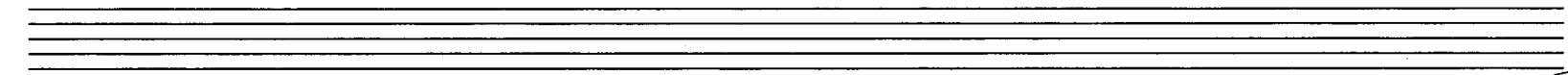
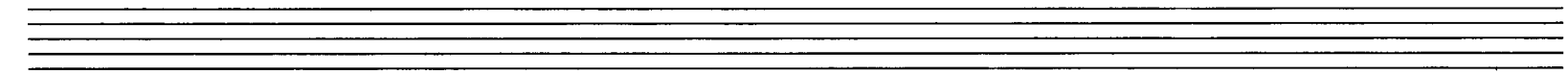
Handwritten musical notation for the third system. The treble staff contains notes with slurs and accents. The bass staff shows chords and rests, with a circled 'f' marking a dynamic change.

campe *dün* — bis *pppp*

Handwritten musical notation for the fourth system. The treble staff has notes with slurs and accents. The bass staff features chords and rests, with a circled 'f' marking a dynamic change.





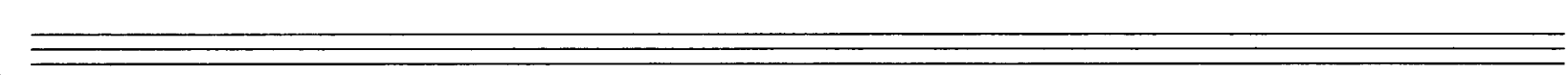
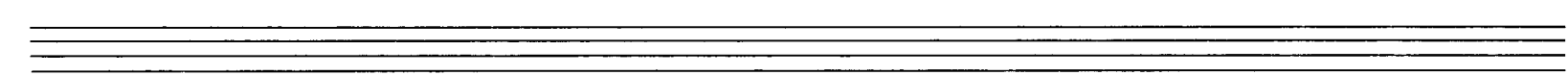
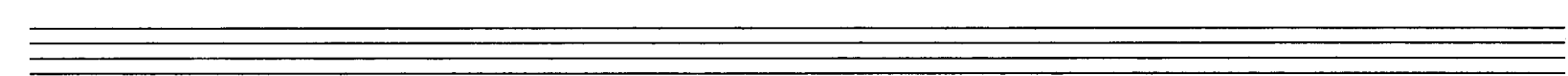
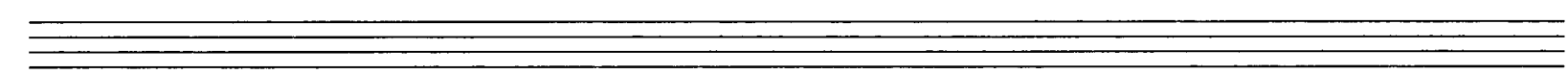
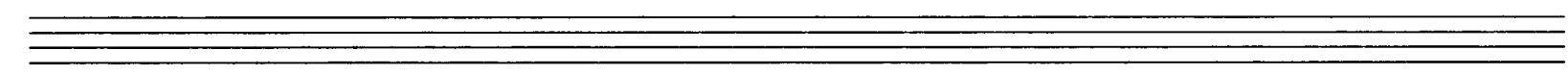
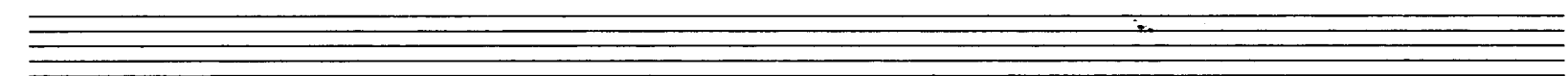
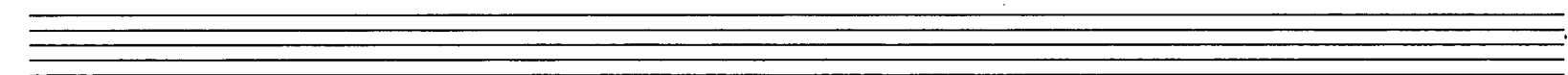
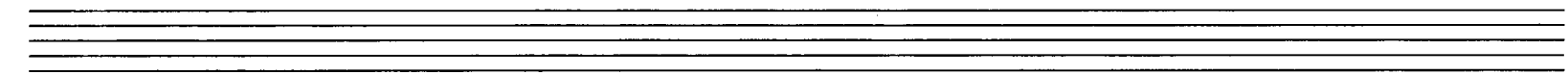


Handwritten musical notation on a grand staff. The right hand part features a melodic line with a slur over the first two measures and a fermata over the final note. The left hand part consists of a rhythmic accompaniment with slurs and accents. The piece concludes with a circled word "Fine" at the end of the staff.

pppp

lunga

Fine



31

Block M

Adagio

1

pp

44 4 2

Fine

44

subito molto

(fz)

pp

4

adagio

ppp

graves mit --- dir

ac. ad
Fine



Block N

Prestissimo (1+ pp
2+ ff
3+ ppp
4+ ???)

Handwritten musical notation for the first system, featuring a treble and bass staff with notes and chords. The bass staff includes chord diagrams with '8' indicating an octave shift.

so rasch als möglich (hart)

Handwritten musical notation for the second system, showing a treble staff with rests and a bass staff with notes and chords.

Handwritten musical notation for the third system, featuring a treble staff with notes and a bass staff with notes and chords.

Handwritten musical notation for the fourth system, including a treble staff with notes, a bass staff with notes and chords, and a 'Gliss' instruction with a wavy line. It ends with a circled 'Fine' and a double bar line.

Block 0

sehr ruhig

Handwritten musical notation for the first system. The treble clef part begins with a whole note chord (Bb, D, F) and continues with a melodic line. The bass clef part starts with a piano (pp) dynamic and features a rhythmic accompaniment of eighth notes. A large slur covers the first two measures of both staves.

Handwritten musical notation for the second system. The treble clef part has a whole note chord (Bb, D) and a melodic line. The bass clef part continues with eighth notes. A 'Fin.' marking is present at the end of the system. A handwritten instruction '> größer rit.....' is written below the bass staff.

Allegro con brio (hart)

Handwritten musical notation for the third system. The treble clef part starts with a 4/4 time signature and features a melodic line with accents (^). The bass clef part has a rhythmic accompaniment of eighth notes with accents (^). The system concludes with a double bar line.

Accel.

Handwritten musical notation for the first system, featuring a treble and bass clef with various notes, rests, and dynamic markings like accents and slurs.

Handwritten musical notation for the second system, continuing the piece with similar notation and dynamic markings.

Breit = (immer langsamer) rit + dim.

Handwritten musical notation for the third system, including a 'rit.' marking and a 'Breit' instruction.

Handwritten musical notation for the fourth system, ending with 'D.C. al Fine' and 'Pedal bis'.

Block [P]

leicht (auf 1) Presto . . .

Handwritten musical notation for the first system. It consists of two staves. The upper staff is in treble clef and contains several chords with accents (^) above them. The lower staff is in piano clef and contains a few notes. There are dynamic markings *ff* and *pp*, and a circled *4x* at the end of the system.

(*Campe arco.*)

Handwritten musical notation for the second system. It consists of two staves. The upper staff is in piano clef and contains a melodic line with a *G.P.* marking and a *ppp =* dynamic. The lower staff is in treble clef and contains a few notes. There are dynamic markings *ppp =* and *f*.

Handwritten musical notation for the third system. It consists of two staves. The upper staff is in piano clef and contains a melodic line with a *mp =* dynamic. The lower staff is in treble clef and contains a few notes. There are dynamic markings *mp =* and *f*.

Handwritten musical notation for the fourth system. It consists of two staves. The upper staff is in piano clef and contains a melodic line with a *mp =* dynamic. The lower staff is in treble clef and contains a few notes. There is a circled *Fine* marking at the end of the system.

Block Q

ruhig (frei)

sehr ruhig

Handwritten musical notation for the first system. The treble clef staff contains a melodic line with notes and rests, marked with a *pp* dynamic. The bass clef staff contains a bass line with notes and rests. The key signature has one sharp (F#).

pesante

Handwritten musical notation for the second system. The treble clef staff features a melodic line with notes and rests, marked with a *pp* dynamic. The bass clef staff contains a bass line with notes and rests. The key signature has one sharp (F#).

Handwritten musical notation for the third system. The treble clef staff features a melodic line with notes and rests. The bass clef staff contains a bass line with notes and rests. The key signature has one sharp (F#).

gr. rit.

Handwritten musical notation for the fourth system. The treble clef staff features a melodic line with notes and rests. The bass clef staff contains a bass line with notes and rests. The key signature has one sharp (F#).

*D.C.
al
Fine*

Block R

Lento

sempre cresc... (bis ffff)

dimore cresc.

Handwritten musical notation for the first system. The treble staff contains a sequence of notes: G4, A4, B4, C5, B4, A4, G4. The bass staff contains chords: G4-A4-B4, G4-A4-B4-C5, G4-A4-B4-C5, G4-A4-B4-C5. There are dynamic markings like accents and a 'cresc.' marking.

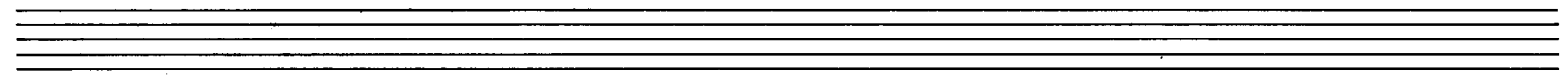
Handwritten musical notation for the second system. The treble staff contains notes: G4, A4, B4, C5, B4, A4, G4. The bass staff contains chords: G4-A4-B4, G4-A4-B4-C5, G4-A4-B4-C5, G4-A4-B4-C5. There are dynamic markings like accents and a 'cresc.' marking.

Handwritten musical notation for the third system. The treble staff contains notes: G4, A4, B4, C5, B4, A4, G4. The bass staff contains chords: G4-A4-B4, G4-A4-B4-C5, G4-A4-B4-C5, G4-A4-B4-C5. There are dynamic markings like accents and a 'cresc.' marking.

Handwritten musical notation for the fourth system. The treble staff contains notes: G4, A4, B4, C5, B4, A4, G4. The bass staff contains chords: G4-A4-B4, G4-A4-B4-C5, G4-A4-B4-C5, G4-A4-B4-C5. There are dynamic markings like accents and a 'cresc.' marking.



№ 2
12 linig



Handwritten musical notation for the first system. The treble clef staff contains a sequence of notes: G4, A4, B4, C5, B4, A4, G4, F4, E4, D4, C4. The bass clef staff contains chords: G4-A4-B4, G4-A4-B4-C5, G4-A4-B4-C5, G4-A4-B4-C5, G4-A4-B4-C5, G4-A4-B4-C5. There are slurs and accents throughout.

Handwritten musical notation for the second system. The treble clef staff contains notes: G4, A4, B4, C5, B4, A4, G4, F4, E4, D4, C4. The bass clef staff contains chords: G4-A4-B4, G4-A4-B4-C5, G4-A4-B4-C5, G4-A4-B4-C5, G4-A4-B4-C5, G4-A4-B4-C5. A circled 'f' is written in the treble staff. There are slurs and accents throughout.

Handwritten musical notation for the third system. The treble clef staff contains notes: G4, A4, B4, C5, B4, A4, G4, F4, E4, D4, C4. The bass clef staff contains complex chordal textures with many notes. There are slurs and accents throughout.

Handwritten musical notation for the fourth system. The treble clef staff contains notes: G4, A4, B4, C5, B4, A4, G4, F4, E4, D4, C4. The bass clef staff contains chords: G4-A4-B4, G4-A4-B4-C5, G4-A4-B4-C5, G4-A4-B4-C5, G4-A4-B4-C5, G4-A4-B4-C5. A circled 'f' is written in the treble staff. There are slurs and accents throughout.

Handwritten musical notation for the first system. It consists of two staves, treble and bass clef. The music includes various notes, rests, and dynamic markings such as accents and slurs. The notation is dense and appears to be a sketch or a working draft.

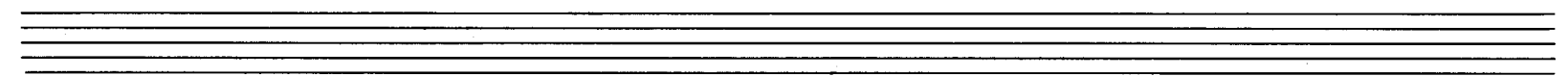
Handwritten musical notation for the second system. It continues the piece with similar notation, including slurs and dynamic markings. The notation is dense and appears to be a sketch or a working draft.

Handwritten musical notation for the third system. It features a treble and bass clef with various notes, rests, and dynamic markings. The notation is dense and appears to be a sketch or a working draft.

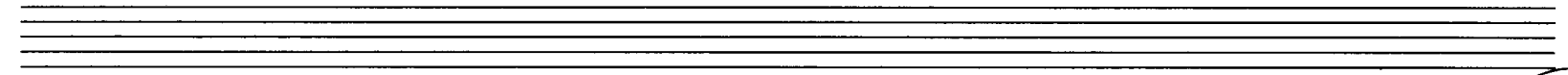
Handwritten musical notation for the first system. The top staff is a treble clef staff with notes and rests. The bottom two staves are a grand staff with piano accompaniment. The notation includes various rhythmic values and accidentals.

Handwritten musical notation for the second system. The top staff is a treble clef staff with notes and rests. The bottom two staves are a grand staff with piano accompaniment. The notation includes various rhythmic values and accidentals.

Handwritten musical notation for the third system. The top staff is a treble clef staff with notes and rests. The bottom two staves are a grand staff with piano accompaniment. The notation includes various rhythmic values and accidentals.

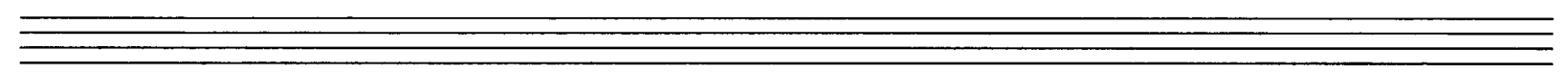
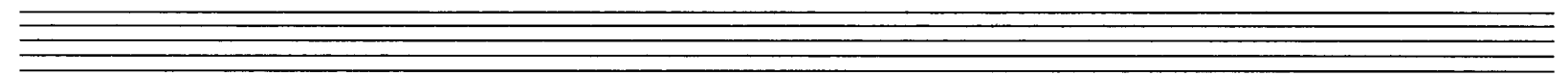
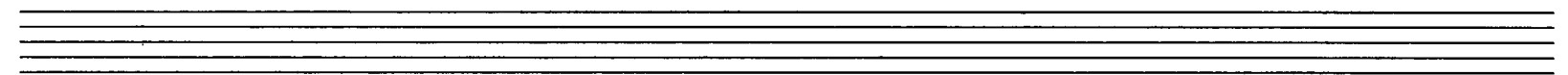
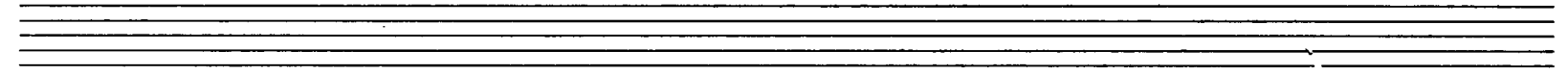


Handwritten musical notation for the first system, consisting of three staves. The top staff contains two measures of chords with accents and a '7777' marking. The middle staff contains two measures of chords with accents and a '7777' marking. The bottom staff contains four measures of dense chordal textures with accents and slurs.



gr. mit

Handwritten musical notation for the second system, consisting of three staves. The top staff has three measures of chords with accents and a circled 'fine' marking. The middle staff has three measures of chords with accents. The bottom staff has four measures of dense chordal textures with accents and slurs.



107